



A Touchstone Energy® Cooperative 

P.O. Box B
1564 S. 1000 Rd, Council Grove, KS 66846
620-767-5144
www.flinthillsrec.com



FLINT HILLS RURAL ELECTRIC COOPERATIVE

NEWS

Flint Hills RECA

Board of Trustees

Roger Zimmerman
President

Shawn Potts
Vice President

Korby Effland
Secretary/Treasurer

Dale Andres
Trustee

Cary Granzow
Trustee

Tim Miser
Trustee

Terry Olsen
Trustee

James Witt
Trustee

Staff

Chuck Goeckel
General Manager

Member Services

- ▶ Viasat Internet Services
- ▶ Online Payment Options
- ▶ Outside Security Lighting
- ▶ Power Surge Protection
- ▶ Rebate Programs

For more information, call us at 620-767-5144 or visit our website at www.flinthillsrec.com

**This institution is an equal
opportunity provider
and employer**

FROM THE MANAGER

We Want to Hear from You

We live in a device-driven world. Our smartphones, tablets, laptops and an assortment of other devices help us communicate and connect. Companies spend billions pushing out a steady drumbeat of messages and information, and we are constantly bombarded with one-way communication. But is anyone listening on the other end?

At Flint Hills RECA, we are not only listening, but we are eager to hear from you. Whether you text us, respond to a survey or social media post, send an email or simply stop by to chat in person, we thrive on your feedback. Connecting with you helps us keep pace with our community's priorities and needs.

Because we are a cooperative, we have a different way of operating. Flint Hills RECA exists to provide safe, reliable and affordable energy to you, the members of the co-op. Equally important is our mission to enrich the lives of the members we serve. We hope you will consider us more than your energy provider, but instead as a local business that supports this community and powers economic development and prosperity for the people.

You will notice throughout the year, we create opportunities for you and other community members to attend co-op gatherings and events to hear from you. These include our annual meeting, safety demonstrations, as well as events like the annual parades and festivals.

We also conduct surveys to gather feedback so we can plan for new initiatives, technical upgrades and improvements on existing co-op programs and services. Our planning is led by local members just like you who understand the needs of the community and are looking out for the long-term interests of the larger community.

We are in the midst of significant changes in the energy sector, as technology and the drive for more renewables and a more balanced energy mix is impacting long-term planning. We will be navigating complex issues in the coming months and years. This is why it's so important we hear from you and other community members as we plot our course for the future.

Flint Hills RECA works to continually learn from our members about their priorities so that we can better serve you — because your electric co-op was built by the community, for the community. But we can only improve, adapt and effectively plan for the future if we have two-way communication.

For our co-op and community to thrive now and in the future, we depend on hearing from you. I hope you will connect with us and let us know your perspective. You can always reach us directly at 620-767-5144 — I'm listening.



Chuck Goeckel

Mark Your Calendars!

Annual Meeting April 7

The Flint Hills RECA annual meeting will be held April 7 at the Herington Community Building. Dinner will be served starting at 5:30 p.m., and the meeting will begin at 6:30 p.m. We hope you will attend the annual meeting and take part in the business of the cooperative.

April 2020						
S	M	T	W	U	F	S
			1	2	3	4
5	6	7	8	9	10	11
12	13	14	15	16	17	18
19	20	21	22	23	24	25
26	27	28	29	30		

Help Us Locate Former Members

Flint Hills RECA has unclaimed Capital Credit refunds that were retired more than three years ago. If you know any of these former members, please have them call us at 620-767-5144.

In accordance with the cooperative's bylaws, failure to claim the refunds within 60 days of this notice (April 1, 2020) will cause the total amount of the refund to be irrevocably gifted back to the cooperative.

If you know the location of any of the members listed below, please let us know. A detailed list that includes the city and state of the last known address is posted on the cooperative's website at www.flinthillsrec.com.

Albert C Weber	Joseph Kramer
Anthony Anderson	Lena Zimmerman
Askren Corporation	Michael Morgan
Best Western Plaza Inn	Milford Franz
Charles C Carter	P T L Feed Service
Cindy A Moore	Permian Corp
Dean McCallum	Ralph Schroeder
Don Hague	Richard A Sholtz
Donald Slawson	Richard Janzen
Dorotha Blankenship	Robert Reimer
Ed Smith Body Shop	Robert W Mutz
Elvin Rowley	Russell Wright Jr.
George Reed	Steven D Windham II
Henry S Hiebert	Tomlinson Oil
Janice Utech	

Do Your Part to Keep Lineworkers Safe

Think about how often you have experienced one of these scenarios:

- ▶ It's nearing 5 p.m. on a workday. Your boss wanted that last-minute report and your children need to be picked up from soccer or play practice. You jump in your car and on the way you approach a work zone. You don't have time to slow down properly so you rush through it, ignoring the orange work zone signs.
- ▶ You're having a garage sale and you think posting a sign on a utility pole won't hurt. Everyone does it, right?
- ▶ Wrong. Either of these situations could injure or kill one of Flint Hills REC lineworkers.

The job of an electric lineworker is not easy. Lineworkers take great pride in providing safe and reliable service, but their job involves working on and around live power and often in the tough elements of winter and spring storms. We ask you to do your part to keep them safe:

1. Slow down and move over in work zones. Vehicles going too fast endanger workers on the ground. Driving too fast or not moving over can also put a lineworker who is working high up in a bucket in danger by causing the utility vehicle to move or sway.
2. Do not post anything on a utility pole, especially with staples, nails or tacks. These can puncture insulated gloves or other protective clothing and expose workers to high voltages.
3. Never plug a generator into an indoor or outdoor wall outlet. The power that back feeds into the electric line could electrocute a utility worker. Contact Flint Hills RECA to learn how to properly use your generator.
4. Please be patient when the power goes out. Lineworkers restore power as efficiently and as safely as possible. We appreciate your help in keeping our employees safe. For questions about employee safety, contact Damien Hebert at 620-767-5144.

HELP KEEP LINeworkers SAFE

Lineworkers take great pride in providing safe and reliable service, but they depend on you to keep them safe. Remember to move over when you see a utility vehicle pulled over, and never affix signs to electrical poles.





The 2019 Flint Hills RECA Cooperative Youth Leadership Camp winners (from left) Brandon Nguyen, Landry Hinkson and Caleb Stout.

Apply to Win a **Free** Trip of a Lifetime

Flint Hills RECA is sponsoring two all-expenses-paid trips to Steamboat Springs, Colorado, on July 10-16, 2020. This trip is part of a four-state Cooperative Youth Leadership Camp, sponsored by rural electric cooperatives in Colorado, Kansas, Oklahoma and Wyoming.

Contest winners will learn about electrification, cooperatives, energy challenges and interpersonal communications. The contest is open to all current high school sophomores and juniors in Flint Hills' service area, whose parents or guardians are members

of Flint Hills RECA. Contest entrants will be interviewed and required to take a brief written test covering material available to each contestant.

If you are a high school sophomore or junior and are interested in this trip, please complete the application form below and send by **FEB. 4, 2020**, to: Flint Hills RECA, Attn: Travis Griffin, P.O. Box B, Council Grove, KS 66846. Once we receive this form, material will then be sent to you for the interview process.

Contest Application for Cooperative Youth Leadership Camp – Due Feb. 4, 2020

Complete and return this application to Flint Hills RECA, Attn: Travis Griffin, P.O. Box B, Council Grove, KS 66846, or tgriffin@flinhillrec.com by Feb. 4, 2020.

Name of Applicant _____ Date of Birth _____

Address _____ City _____ State _____ Zip _____

School _____ Year in School _____

Name of Parent(s)/Guardian(s) _____ Phone Number _____

I AGREE THAT ALL INFORMATION SUPPLIED IN THIS APPLICATION IS ACCURATE AND TRUE.

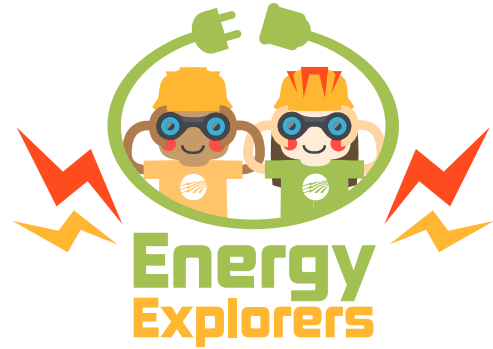
Signature of Applicant _____

I HEREBY GRANT PERMISSION FOR _____ TO APPLY FOR THE 2020 COOPERATIVE YOUTH LEADERSHIP CAMP SPONSORED BY FLINT HILLS RECA.

Signature of Parent or Legal Guardian _____

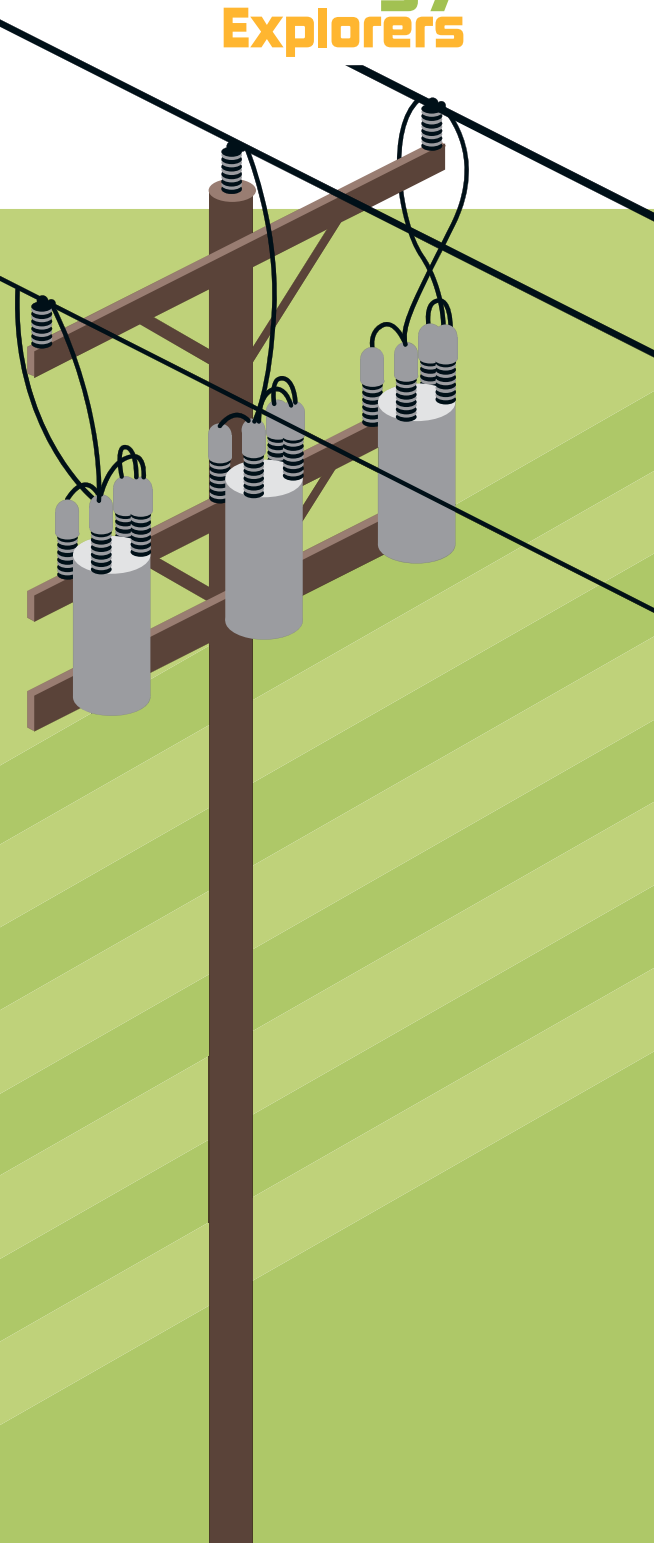
ELECTRICAL EQUIPMENT WORD SCRAMBLE

Electric co-ops use a variety of equipment to make sure you and your family receive reliable electricity. Can you unscramble the equipment terms below?



Use the provided clues for help, and double check your work in the answer key below.

1. **ORNSTAMREFR** _____
 These can look like large metal cans on top of utility poles or big green boxes on the ground. They are used to reduce the voltage of electricity, making it safe for use in your home.
2. **OERPW NSLIE** _____
 These can hang overhead or be placed underground. They carry electricity from where it's generated to homes and businesses in your community.
3. **OUTASBSNTI** _____
 This is an electrical facility that contains equipment for controlling the flow of electricity.
4. **RCTLECIE ERMTE** _____
 These devices are typically found outside the home and measure the amount of electricity you use.
5. **CBUTKE KTURC** _____
 Lineworkers use these types of vehicles to reach power lines and poles when making repairs and updates to the electrical system.



Answer Key: 1. TRANSFORMER 2. POWER LINES 3. SUBSTATION
 4. ELECTRIC METER 5. BUCKET TRUCK