

**FLINT HILLS RURAL
ELECTRIC COOPERATIVE**

NEWS



Flint Hills RECA

Robert E. Reece General Manager

Board of Trustees

Gary Burton
President

Duane Kaiser
Vice President

Duane Carlson
Secretary/Treasurer

Dale Andres
Trustee

David Cosgrove
Trustee

Grame Glaser
Trustee

Gus Hamm
Trustee

Bill Hein
Trustee

Donald Kraus
Trustee

Tim Miser
Trustee

Shawn Potts
Trustee

Roger Zimmerman
Trustee

Member Services

- ▶ ACH / Bank Draft Program
- ▶ Credit Card Services
- ▶ Energy Management Services
- ▶ Outside Security Lighting
- ▶ Power Surge Protection
- ▶ Rebate Program

Flint Hills Rural Development

DirecTV Services

WildBlue High Speed Internet

Full line of High Definition

Televisions & Electronics

Flint Hills Rural Development

800-732-6757

Nominating Committee Selected

The members listed in the chart at the right have been appointed by the Board to serve on the 2010 Nominating Committee.

Each district Nominating Committee is to propose two candidates for Trustee from their respective district. District nominees will be voted on by the membership at the annual meeting to fill Board positions which expire at that time.

Those Trustees whose terms expire at the 2010 Annual Meeting are Shawn Potts, Duane Carlson, Duane Kaiser, and Bill Hein.

The Nominating Committee will receive a list of members in their district, which will be of assistance in seeking nominations. Nominating committee members are to nominate two candidates for each Trustee position of their respective districts and proposed candidates should be contacted prior to committee

meeting to determine their willingness to serve on the board.

All Nominating Committee meetings will be held at the Flint Hills RECA offices, 1564 S. 1000 Rd, Council Grove, on Tuesday, February 2, 2010, at 11:45 a.m.

2010 Nominating Committee

District 3: Shawn Potts, Trustee

▶ **John Roniger**
3020 Diamond Cr Rd, Burdick, KS 66838
620-273-240

▶ **Alvin Hailey**
2628 Diamond Cr Rd, Burdick, KS 66838
620-273-6816

▶ **Doug Cahoone**
1844 180th Rd, Cottonwood Falls, KS 66845
620-273-8325

District 5: Duane Kaiser, Trustee

▶ **James Hamm**
981 330th, Tampa, KS 67483
785-965-2694

▶ **Richard Dirks**
3405 Hwy K15, Tampa, KS 67483
620-732-2383

▶ **Wayne Geis**
240 300th, Durham, KS 67438
620-732-3375

District 4: Duane Carlson, Trustee

▶ **Kenneth Nienstedt**
2095 Yarrow, Marion, KS 66861
620-382-2716

▶ **Dennis Krause**
2910 Bluestem Rd, Lincolnville, KS 66858
785-983-4887

▶ **Bill Broce**
2533 310th St, Lost Springs, KS 66859
785-983-4373

District 6: Bill Hein, Trustee

▶ **Eldon Andres**
1661 90th St, Peabody, KS 66866
620-983-2366

▶ **Reno Penner**
1211 Indigo, Hillsboro, KS 67063
620-947-3626

▶ **Ervin Ediger**
1861 Falcon, Hillsboro, KS 67063
620-947-3258

**Mark Your Calendars
for Annual Meeting**

Please mark your calendars for the Flint Hills RECA Annual Meeting on March 23, 2010, at the Centre High School. Next month's *Kansas Country Living* will have more details about the meeting. Or you can go to our Web site for this and any other news items from Flint Hills RECA at www.flinthillsrec.com.

March 2010						
S	M	T	W	U	F	S
	1	2	3	4	5	6
7	8	9	10	11	12	13
14	15	16	17	18	19	20
21	22	23	24	25	26	27
28	29	30				

Could Your Home Benefit From an Energy Audit?



For more information visit www.energycanada.com

An energy audit can help homeowners prioritize energy efficient improvements for their homes, said Bruce Snead, Kansas State University Research and Extension residential energy specialist.

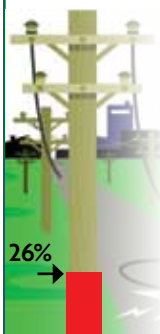
Such audits use building science techniques to evaluate the energy performance of the home, such as blower door tests for air leakage, infrared cameras for heat loss, and energy usage/cost estimating software.

The savings for a recently-constructed new house may not be the same as potential savings for an older home, which often can benefit from air-sealing and insulation.

A standard residential energy audit will cost about \$350, which is usually offset by future savings, he said. The just launched Efficiency Kansas loan program requires an audit to identify projects that are cost effective. To kick off the new program, the State Energy Office will provide the first 1,000 participants a \$350 rebate to offset the costs of the energy audit.

For more information on this opportunity go to www.energycanada.com.

FEMA Restoration Update



As of December 1, Flint Hills RECA has completed 129.5 miles of our 492 miles of Federal Emergency Management Agency (FEMA) rebuild work. Just 362.5 miles remain.

Net Metering to be Considered

The Board of Trustees will be considering the adoption of a service rider for the cooperative to implement “net metering.” The net metering rider will be available to members operating their own renewable generation resource, such as a small wind turbine. Members must enter into an interconnection agreement with the cooperative to qualify for the rider.

Net metering, as the name implies, is a metering process designed to determine the net amount of energy provided to the member by the cooperative and the energy provided to the cooperative by the member. Net metering service is designed primarily to allow a member to offset some or all of their electrical requirements with their own generation. When the member generates some, but not all, of their requirements, net metering simply allows the meter to slow down. But in some instances, the energy generated exceeds the member’s usage. In those instances, net metering allows the meter to run

backward, either offsetting prior usage or “depositing” kilowatt hours into the “bank” (the meter) that the member can “withdraw” up until the end of the billing period (end of each month).

At the end of the billing period, a member that has used more energy than he supplied pays the cooperative for that usage; however, a member that supplies more energy than he uses during the billing period is not compensated for the excess energy supplied under net metering.

Members desiring to be compensated for generation in excess of what they supply might gain more advantage by interconnecting under the cooperative’s parallel generation riders. Under parallel generation, the purchase rate for excess energy from a renewable resource is 150 percent of the cooperative’s monthly system average cost of energy, as required by Kansas state law. In either case, the member must pay the standard monthly customer charge required of other members.

Notice of Board of Trustees Meeting

Pursuant to K.S.A. 66-104d, please take notice that the Board of Trustees of Flint Hills Electric Cooperative Association, Inc., will meet on January 18, 2010, at 7 p.m. at the Cooperative Headquarters, 1564 S. 1000 Rd, Council Grove, to discuss and vote on the adoption or modification of any or all of the following rules, regulations, rate schedules, riders, or terms of service:

1. The adoption of a net metering rider for member-owned renewable generation.

The Board will consider the adoption of a net metering rider applicable to certain member-owned renewable generation installations installed primarily to offset the member’s own energy usage. The rider would enable members with qualified installations to offset the energy purchased from the cooperative with renewable energy generated by the customer over the

length of each billing cycle.

2. Modifications to cooperative rules, regulations, and terms of service governing the operation of parallel generation by members.

Under certain terms and conditions set forth in K.S.A. 66-1,184 and the rates, rules and regulations of the cooperative, members may operate generation in parallel with that provided by the cooperative. The Board of Trustees will consider amendments to the existing rates, rules and regulations to comply with legislative amendments to K.S.A. 66-1,184 and to establish consistency with the terms of other member-owned generation.

The meeting is open to any member that wishes to attend. Any member with questions may contact Robert Reece, General Manager.

Wanted! Youth Tour Participants

Sophomores and Juniors: Don't Miss This All-Expense-Paid Trip of A Lifetime!



Taylor Diehl (in black shirt sitting) and his teammates build a power system model at the 2008 Cooperative Youth Leadership Camp in Steamboat Springs, CO.



Donavon Campuzano (right) toured Craig Station Power Plant to learn how electricity is generated while at Cooperative Youth Leadership Camp in Steamboat Springs, CO.

The Flint Hills RECA is sponsoring two all-expense-paid trips to Steamboat Springs, Colorado on July 10-16, 2010.

This trip is part of a four-state Cooperative Youth Leadership Camp, sponsored by rural electric cooperatives in Colorado, Wyoming, Oklahoma and Kansas.

Contest winners will learn about electrification, cooperatives, energy issues, leadership and interpersonal communications.

The contest is open to all current high school sophomores and juniors in Flint Hills' service area, whose parents or guardians are members of Flint Hills RECA.

Contest entrants will be interviewed and required to take a brief written test covering material that will be made available to each contestant.

If you are a high school sophomore or junior and are interested in this trip, please call our office at 620-

767-5144 or send an e-mail to diann@flinthillsrec.com by February 5, 2010. Once we receive your call or email, material will be sent to you for the interview process. Attendance will be required for the interview which is scheduled to be held on a later date, at Flint Hills RECA offices in Council Grove.

The best source of information on this trip of a lifetime would be our past campers, Taylor Diehl and Donavon Campuzano. If you know these previous winners, ask them about their experiences.

You can also find out more information from the 2010 Cooperative Youth Leadership Camp brochure on our Web site at www.flinthillsrec.com.

CO-OP Connections Update		Have you taken advantage of your Connections Card yet?	
	Prescriptions Filled	Savings to Flint Hills' Members	
November	19	\$444.24	
2009 Total	298	\$4,757.39	

 WILDBLUE DELIVERS

NEWS

ENTERTAINMENT

▶ TRAVEL 

EDUCATION

COMMUNITY

Where Can WildBlue Take You?

WildBlue makes it easy to plan vacations and virtually "visit" any destination in the world in real-time. Say goodbye to slow dial-up connections and say hello to the premier high-speed satellite Internet service — WildBlue.

WildBlue is blazing fast (up to 30x faster than dial-up), always on and available where you live. Contact us today to take advantage of all WildBlue has to offer you.



WILDBLUE
Satellite Speed Internet™



**Flint Hills Rural Development
1564 S 1000 Road
Council Grove KS 66846
800-732-6757**

**First 12 months, Value Pak only
\$39.95
Installation only \$99.00 with
approved credit.
(plus tax)**

Requires a clear view of the southern sky. Not available in all areas. Usage subject to WildBlue's Fair Access Policy. Speeds not guaranteed. Prices subject to change. Equipment, monthly service fees, installation charges, taxes and minimum term commitments also apply. ©2006 WildBlue Communications, Inc. WildBlue, the WildBlue logo and Satellite Speed Internet are trademarks or registered trademarks of WildBlue Communications, Inc.